

BM-18A | PNEUMATIC PLATE BEVELLER

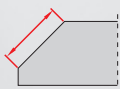
The BM-18A is a new Promotech's plate beveller with a powerful pneumatic motor.

It enables milling straight edges up to 18 mm bevel width, contours, holes from 40 mm in diameter and rounding radius R2, R3, R4, R5.

New hexagonal fixing of milling heads increases beveller durability and makes replacement of the heads more convenient and user-friendly.

Features & benefits:

- Powerful pneumatic motor
- Maximum 18 mm bevel width (more than one pass could be required)
- New more durable milling heads with hexagonal fixing
- Easy replacement of milling heads
- Beveling milling head is equipped with 5 pcs of 2-sided indexable cutting inserts
- Milling head for rounding is equipped with 4 pcs of 4-sided indexable inserts up to R5



Max. bevel width
18 mm



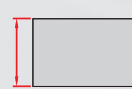
Top beveling



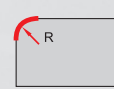
Bevel angles
22.5°, 30°, 37.5°, 45°,
50°, 55°, 60°



Countersinking
Min. ID 40 mm



Min. plate thickness
2 mm



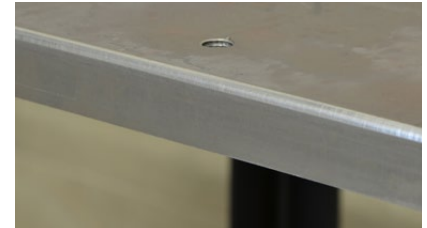
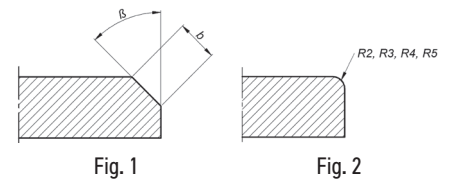
Rounding edges
(option)
R2, R3, R4 or R5



Arched edge
beveling

BM-18A TECHNICAL SPECIFICATION

Spindle speed (without load)	6.000 rpm
Maximum bevel width	b=18 mm (Fig.1)
Bevel angle (depending on milling head in use)	$\beta = 22.5^\circ, 30^\circ, 37.5^\circ, 45^\circ, 50^\circ, 55^\circ, 60^\circ$ (Fig. 1)
Minimal diameter of countersinking	ca 40 mm (1.57")
Rounding edges (option)	R2, R3, R4, R5 (Fig. 2)
Minimal plate thickness	2 mm
Air requirement	6 bar (0,6MPa) (87 PSI)
Air consumption	1800 L/min , (64 CFM)
Pneumatic drive	2.800 W
Minimum required diameter of supply hose	19 mm (3/4")
Weight (without milling head)	9,3 kg
Product Code	UKS-0640-10-00-00



Creating a perfect radius on both straight and curved edges



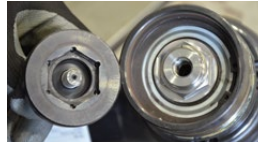
Aluminum beveling



Bevel on holes from 40 mm in diameter

New design of milling heads with hexagonal fixing:

- increases durability
- more convenient assembly and disassembly of the milling head
- guiding roller is integrated with each milling head
- the clearance between milling head and guiding roller is precisely factory calibrated, thus requires no adjustment by the operator



Beveling milling head Milling head for rounding

Basic set:

- BM-18A beveling machine w/o accessories (see list below)
- Handle
- Plastic box
- Lock pin
- 32mm flat wrench
- Grease for mounting screws (5 g, 0.17 oz)
- Allen wrench hex s=6
- Toolbox
- Operator's Manual

Accessories:

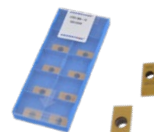
GLW-0640-30-01-00-0	Beveling milling head 22.5° (5 cutting inserts required)
GLW-0640-30-02-00-0	Beveling milling head 30° (5 cutting inserts required)
GLW-0640-30-03-00-0	Beveling milling head 37.5° (5 cutting inserts required)
GLW-0640-30-04-00-0	Beveling milling head 45° (5 cutting inserts required)
GLW-0640-30-05-00-0	Beveling milling head 50° (5 cutting inserts required)
GLW-0640-30-06-00-0	Beveling milling head 55° (5 cutting inserts required)
GLW-0640-30-07-00-0	Beveling milling head 60° (5 cutting inserts required)
PLY-000395	Cutting insert for steel (sold 10 pcs/box)
PLY-000195	Cutting insert for aluminum (sold 10 pcs/box)
GLW-0640-30-34-00-0	Milling head for rounding (4 cutting inserts required)
PLY-000737	Cutting insert R2 (sold 10 pcs/box)
PLY-000738	Cutting insert R3 (sold 10 pcs/box)
PLY-000739	Cutting insert R4 (sold 10 pcs/box)
PLY-000740	Cutting insert R5 (sold 10 pcs/box)
UST-0509-16-00-00-0	Radius insert positioner
ZST-000021	Air preparation unit

Spare and consumable parts:

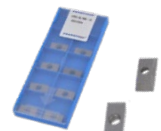
SRB-000289	Insert Screw (Radius)
SRB-000290	Insert Screw (Beveling)
SMR-000005	Screw grease (5 g)
RLK-0640-99-02-00-0	Beveling roller
RLK-0640-99-03-00-0	Radius roller
NKL-0640-07-00-00-0	Sticker against scratches (for aluminum beveling)
WBJ-000002	Lock pin



Air preparation unit ZST-000021 is strongly recommended for all applications.



PLY-000395



PLY-000195



PLY-000740



NKL-0640-07-00-00-0

UST-0509-16-00-00-0



PROMOTECH Sp. z o.o.
ul. Elewatorska 23/1, 15-620 BIAŁYSTOK, POLAND
tel. (+48 85) 678 34 05, fax (+48 85) 662 78 77
marketing@promotech.eu www.promotech.eu

Your local dealer:

