

## MINI SPIDER BATTERY | CORDLESS WELDING TRACTOR

The MINI SPIDER BATTERY is a battery-powered welding tractor designed to produce continuous fillet welds using MIG/MAG torches. The CAS LiHD (High Density Lithium Ion) battery provides sufficient power for handling even the toughest applications without the need for cables.

The 4-wheel drive system and permanent magnetic base provide powerful traction and smooth travel. Travel speed control and stabilization enable precise matching of weld bead geometry to required specifications, reducing costly over-welding and significantly decreasing filler metal consumption. The torch can be swapped from one side of the MINI SPIDER BATTERY to another, enabling the operator to weld the entire workpiece from end to end.

### Features and benefits:

- The compact and lightweight design facilitates welding in narrow spaces
- Convenient 18 V DC battery supply (same 4.0 Ah battery as other PROMOTECH battery-powered tractors)
- No need for mains power and one less cable to carry around
- Intelligent battery management for long-lasting performance
- Digital LED display for presetting of travel speed and diagnostic messages
- Easy access for battery charge level reading
- Built-in guide rollers with adjustable height
- Torch placement on either side
- Welding edge to edge (e.g. welding of stiffeners for bridge structures)
- Consistent heat input reduces distortion



**BOOST YOUR MOBILITY  
WITH BATTERY POWER!**  
No need for power cables

### New control system of battery pack:

#### Detection and supervised parameters:

- too low and too high voltage
- too low and too high temperature
- failure of the temperature sensor
- internal battery failure

#### Benefits:

- over discharge protection
- extended battery life
- high level of safety for both tractor and operator



Torch placement on either side



Welding edge to edge



Welding in narrow spaces (min. width 200 mm)



Continuous  
welding



Horizontal speed  
0-110 cm/min



Torch placement  
on either side



Welding in  
narrow spaces



Weight  
6,6 kg

MINI SPIDER BATTERY Technical Specification	
Voltage	18 V DC, 4.0 Ah
Power	25 W
Welding position (according to EN ISO 6947 and AWS/ASME)	PB / 2F PA / 1F
Torch diameter	16–22 mm (0.63–0.87")
Min. workpiece thickness	4 mm (0.16")
Ground clearance	4 mm (0.16")
Horizontal pulling force	150 N
Horizontal speed *	0–110 cm/min (0–43.3 in/min)
Cross slide adjustment range	0–21 mm (0–0.83") up down, left-right
Weight (w/o battery)	6.6 kg (14.6 lbs)
Product code	WOZ-0759-10-00-00-0

\* With battery fully charged

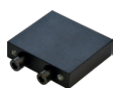
### Standard accessories:



Battery 4.0 Ah  
AKM-0738-10-00-01-0  
(2 pcs included)



Torch holder  
ZCS-0270-42-00-00-0



Bracket for opposite  
torch placement  
DYS-0759-08-00-00-0

### Optional accessories:



Universal cross slide  
ZSP-0759-07-00-00-0



Enlarged cross slide bracket  
WSP-0759-12-01-00-0



Auxiliary magnet blocks  
ZSP-0759-10-00-00-0



Cable anchor  
PDT-0526-21-00-00-0

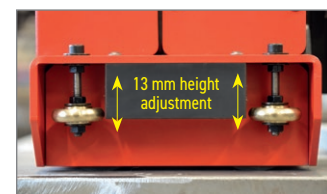


Horizontally laid control panel with display for easy reading and knob adjustment.

Side mounted battery for ergonomic handling with easier access for battery charge level reading.



Specially designed shielding with an undercut that facilitates multi-pass welding and significantly reduces the risk of collisions



Height-adjustable guide rollers in a range of 13 mm



Battery  
Charger  
LDW-0738-10-00-30-0 (EU)  
LDW-0738-06-00-30-0 (AUS/NZ)  
LDW-0738-04-00-30-0 (UK)

### Torch position on both sides

The regular configuration of the tractor allows the torch to be mounted on the preferred side of the tractor. Either left or right. No optional accessories are required to change the torch position side.



Cross-slide with torch holder on the left



Universal cross-slide with torch holder and bracket are included in standard shipping set



Cross-slide with torch holder on the right

### Optional configuration with two cross slides

If the customer finds it useful to have the tractor ready to hold a torch on either side, the optional cross slide is needed.



Torch to be held on one side



Optional universal cross-slide



Torch to be held on both sides

### Standard shipping set:

- Tractor
- Plastic box
- Bracket
- 3 mm hex wrench
- 4 mm hex wrench
- 5 mm hex wrench
- Battery 4.0 Ah (2 pcs)
- Operator's manual

Mitglied im DVS - Deutscher Verband für Schweißen und verwandte Verfahren e. V.

DVS VERBAND



American Welding Society  
Supporting Company Member

More information on [www.promotech.eu](http://www.promotech.eu)



PROMOTECH Sp. z o.o.  
Elewatorska 23/1  
15-620 Białystok, POLAND  
Phone +48 85 678 34 05  
[marketing@promotech.eu](mailto:marketing@promotech.eu)



Your local dealer: