

## PRO-50/2 ATEX | 2-SPEED PNEUMATIC MAG DRILL

The PRO-50/2 ATEX machine has been designed to produce 50 mm holes with annular cutters and 23 mm holes with twist drill bits.

The combination of a pneumatic drive and a permanent magnetic base eliminates the need for an electric power supply.

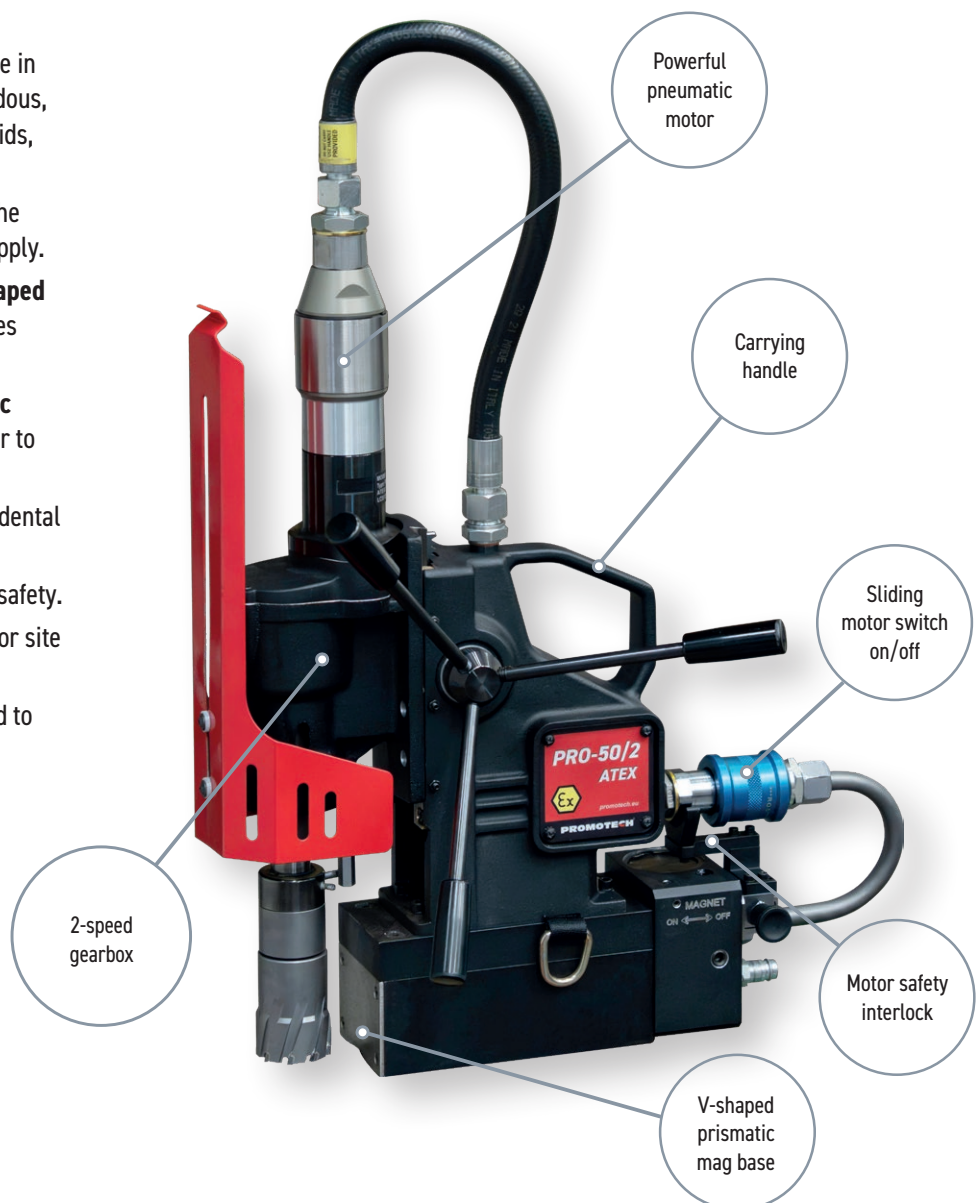
**This mid-sized ATEX-approved**, pneumatic drill is ideal for use in confined and hazardous environments such as oil rigs, refineries, shipbuilding, and the petrochemical industry, where electric appliances are prohibited for safety reasons.

### Features & benefits:

- **ATEX-approved materials.** Safe for use in Ex zones and environments with hazardous, flammable, or combustible vapors, liquids, dust, or residues.
- **Strong permanent magnet.** Secures the drill without the need for an electric supply.
- **Permanent magnetic base with V-shaped prismatic foot.** Enables drilling on pipes from 250 mm upwards.
- **Innovative sliding ON/OFF pneumatic motor switch.** Provides compressed air to the pneumatic motor.
- **Mechanical safety lock.** Prevents accidental motor activation.
- **Magnet ON/OFF indicator.** Enhances safety.
- **Compact size and lightweight.** Ideal for site work.
- **2-gearbox.** Allows speed to be matched to the tool



PRO 50/2 ATEX conforms to  
II 2G Ex h IIC 135°C (T4) Gb  
and II 2D Ex h IIIB T135°C Db  
requirements for equipment  
used in hazardous environments



Core drill  
50 mm  
(2")



Twist drill  
23 mm  
(13/16")



Depth of cut  
50 mm  
(2")



Stroke  
150 mm  
(5-29/32")



Speed  
190 rpm, 290 rpm



Motor Power  
800 W



Weight  
24,5 kg  
(54 lbs)

## PRO-50/2 ATEX TECHNICAL SPECIFICATIONS

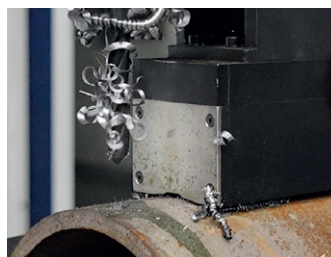
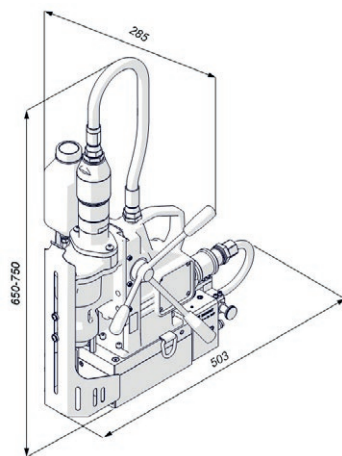
Motor speed (under load)	190 rpm (gear I) 290 rpm (gear II)
Motor power	800 W
Weight	24,5 kg (54 lbs)
Max milling capacity	50 mm (2")
Max drilling capacity	23 mm (13/16")
Stroke	150 mm (5-29/32")
Max depth of cut	50 mm (2")
Tool holder	19 mm (3/4") Weldon
Air consumption	1400 l/min (50 CFM)
Pressure	6 bar (87 psi)
Air connection	CEJN 410 DN 10.4 R 3/8" BSPT fitting for quick coupling
Spindle	MT2
Minimum diameter of air hoses	13 mm (33/64")
Required ambient temperature	0-40 °C (32-104 °F)
Minimum workpiece thickness	10 mm (25/64")
Minimum pipe diameter*	250 mm (9-27/32")
Magnetic base holding force (surface with the thickness of 25 mm and roughness Ra = 1.25)	968 kgf (9500 N)
Magnetic base dimensions	90 mm x 192,5 mm x 66,5 mm (2 5/8" x 3 35/64" x 7 37/64")
Potentially explosive atmosphere	II 2G Ex h IIC 135°C (T4) Gb II 2D Ex h IIIB T135°C Db
Product Code	WRT-0818-10-00-00-0

\*always check the clamping of the magnetic base using the indicator

### Standard shipping set:

- pneumatic drilling machine
- metal box
- feed handles
- MT2 arbor
- MT2 drift
- safety chain
- cooling system
- protective spring for cooling hose
- air quick coupling
- 2,5 mm hex wrench
- 4 mm hex wrench
- 5 mm hex wrench
- 8 mm combination wrench
- operator's manual

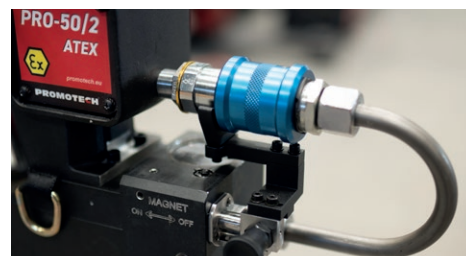
### Dimensions:



Max drilling capacity 23 mm



2-gearbox to match the speed to the tool



Protection against accidental motor start-up when the magnetic base is not activated



Clamping level indicator for safety and security



Max depth of cut 50 mm



V-shaped prismatic mag base for pipe drilling



Max milling capacity 50 mm

All information is subject to change without notice. 24.11



PROMOTECH Sp. z o.o.  
ul. Elewatorska 23/1, 15-620 BIAŁYSTOK, POLAND  
tel. (+48 85) 678 34 05, fax (+48 85) 662 78 77  
marketing@promotech.eu www.promotech.eu

Your local dealer:

