

■ GECKO | COMPACT WELDING TRACTOR

Gecko is a portable trackless welding tractor that features a 4-wheel drive system with magnetic traction and a control loop feedback mechanism that provides speed stabilization in all welding positions.

Constant, continuous, and repeatable travel speed enables weld bead geometry that is exact to the required specifications, thus reducing costly over welding and decreasing filler metal usage, substantially.

Users can select arc ignition times of up to 5 seconds at the start and end of tractor travel to create a preferred weld fill at both ends.

A wide range of accessories makes Gecko suitable for a variety of positions and applications.

A compact design tractor weighing 8 kg can be carried anywhere.

■ Applications:

- Trailer manufacturing
- Truck tanks
- Oil tanks
- Water storage tanks
- Transformers
- Shipyards
- Any application demanding a long, continuous fillet weld

■ Primary features and benefits

- The closed-loop speed control system stabilizes travel speed, enabling uniform heat input to produce consistently high-quality welds
- Multifunctional LED display to present travel speed, units and diagnostic messages
- 4-wheel drive magnetic traction permits out-of-position use
- Possibility of pre-setting the torch activation time before and after the tractor travel for better filling of the weld seam at both ends
- Convenient Power Supply 115–230 V, 50–60 Hz or 42 V, 50–60 Hz
- Gecko produces consistently high-quality welds and cuts in a fraction of the time required by manual operations
- Reduce wasted filler metal – eliminates over welding



42V AC version available



GECKO HS (High Speed)

with increased horizontal speed up to 220 cm/min (86.6 in/min) is suitable for both speed welding and plasma cutting



Continuous welding



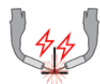
Dual torch welding



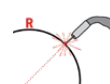
Horizontal speed 0-110 cm/min
(0-43.3 in/min)



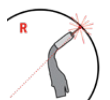
Vertical speed 0-100 cm/min
(0-39.4 in/min)



Dual Arc Ignition



Min. path convex radius 600 mm (23.6")

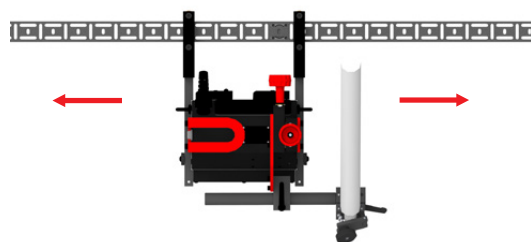
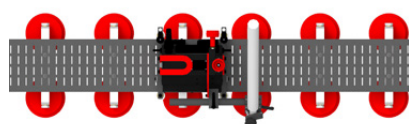
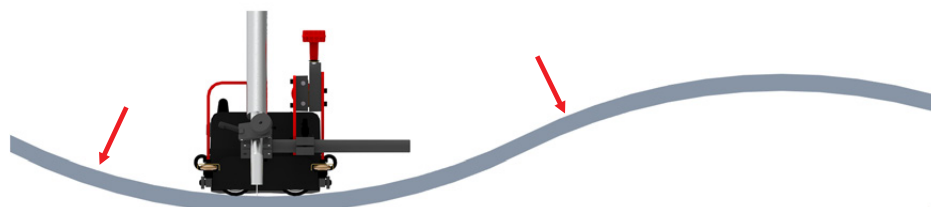
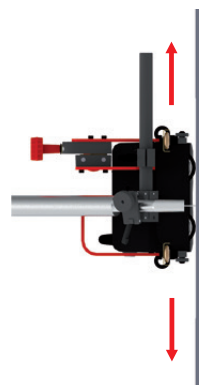
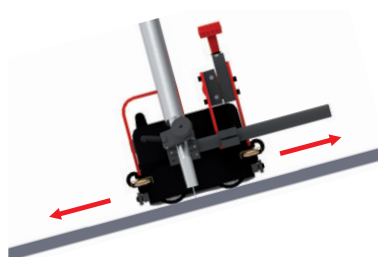
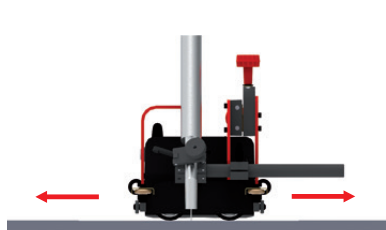


Min. path concave radius 800 mm (31.5")

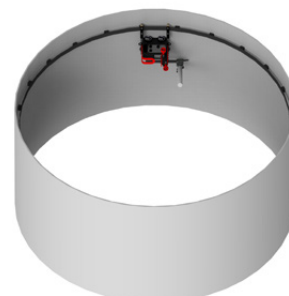


Weight 8 kg (18 lbs)

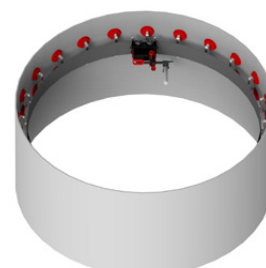
■ Versatility of Gecko welding tractor applications including out-of-position use



Min. path convex
radius 600 mm

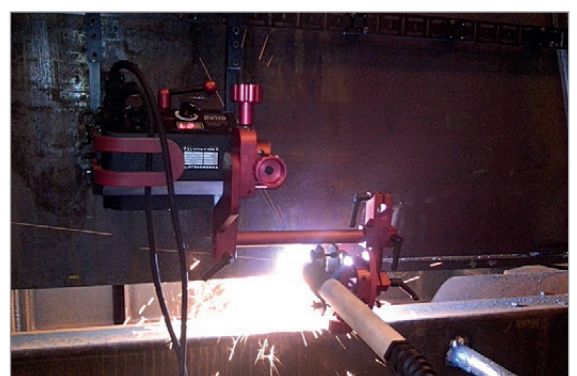
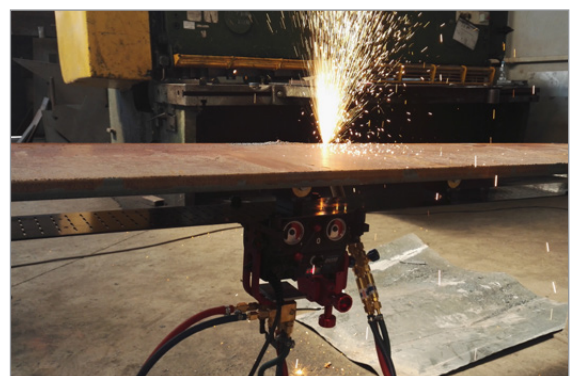


Min. path concave
radius 800 mm



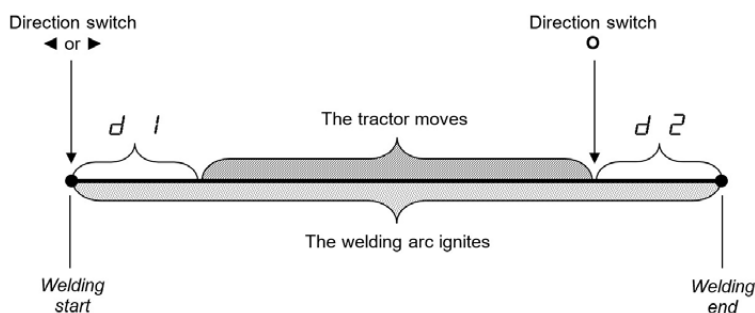
More features and benefits of Gecko welding tractor:

- Compact, lightweight design with durable aluminum cast housing
- Positive magnetic traction permits out of position use
- Heat resistant silicone wheels
- Quick clamping Torch Holder mechanism for different types of MIG/MAG torches with diameters of 16-22 mm (5/8" - 7/8"); optionally up to 35 mm (1-3/8")
- Precise torch adjustment with screw drive cross slide
- Capable of carrying and controlling 2 torches
- Self-guiding roller arms eliminate the need for track
- Multi-surface guiding with user-friendly adjustment of tractor position
- Improves working environment - removes operator from heat and fumes
- Thermal cutting possible



Pre-setting torch activation time

- Users can now select arc ignition times of up to 5 seconds at the start and end of the GECKO travel to create a preferred weld fill at both ends.



Parameter	Value	Description
$d1$	0-5 s [step: 0.5 s]	Tractor movement delay time. When the direction switch is set to ◀ or ▶: • $d1 = 0$ s - the arc ignites and the tractor starts immediately, • $d1 > 0$ s - the arc ignites and the tractor starts after the set time (see drawing above)
$d2$	0-5 s [step: 0.5 s]	Arc out delay time. When the direction switch is set to 0: • $d2 = 0$ s - the tractor stops and the arc goes out immediately, • $d2 > 0$ s - the tractor stops and the arc ignites for the set time (see drawing above)

Standard accessories



Standard guide arms (set of 2 pcs)
ZST-0752-17-00-00-0



Long rod torch holder with clamp 16-22 mm
UCW-0752-07-00-00-0



Dual arc ignition cable of 6.5 m (21 ft)
KBL-0466-17-00-00-0

Optional accessories for variety of applications



Torch clamp 16-22 mm
ZRZ-0752-07-01-00-0



Torch clip 16-22 mm
ZCS-0476-06-01-00-0



Torch clamp 22-35 mm
ZRZ-0466-19-00-00-0



Short Rod Clamp
WLK-0476-20-01-00-0



Short rod torch holder
with clip 16-22 mm
UCW-0476-27-00-00-0



Long Rod Clamp
WLK-0466-04-10-00-0



Short rod torch holder
with clamp 16-22 mm
UCW-0754-07-00-00-0



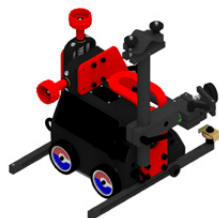
Long rod torch holder
with clip 16-22 mm
UCW-0466-22-00-00-0



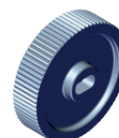
Torch Extension Arm
PRD-0466-43-00-00-0



Cable anchor
PDT-0466-55-00-00-0



Extended cross-slide
0-76 mm (0-3") up-down,
0-35 mm (0-1.38") left-right
ZSP-0466-46-00-00-1



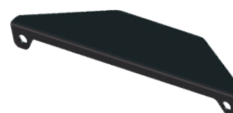
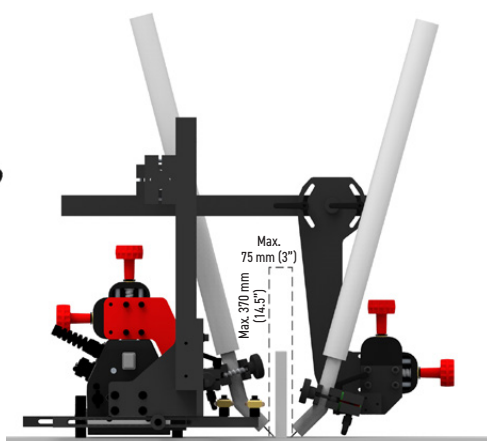
Stainless steel driving wheel
KOL-0466-72-00-00-0



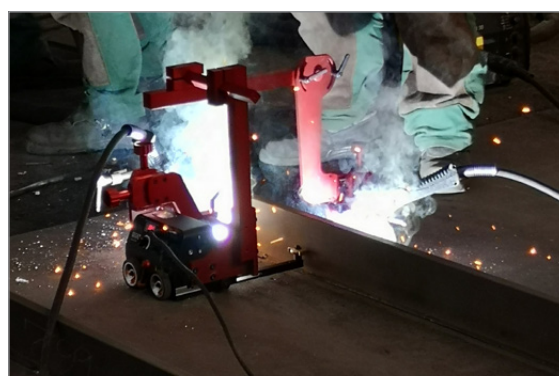
Fall arrester device
URZ-000001



Dual Torch Mount
PDT-0466-40-00-00-0



Display shield
OSL-0466-29-00-00-0





Magnet blocks (front)
clamping force 55 N
BLO-0752-21-00-00-0



Magnet blocks (front)
clamping force 80 N
BLO-0752-22-00-00-0



Magnet blocks (back)
clamping force 55 N
BLO-0466-45-01-00-0



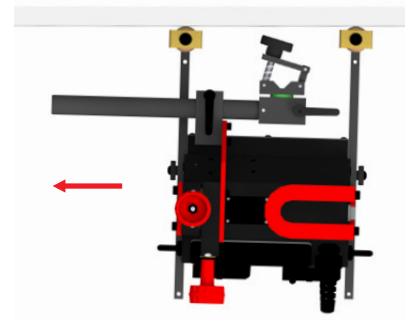
Magnet blocks (back)
clamping force 80 N
BLO-0466-48-01-00-0



Optional accessories for multi-surface guiding and variety of applications

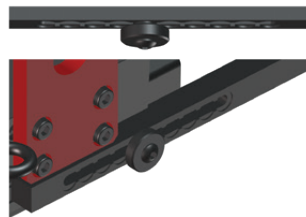
Guide arms enable a proper welding tractor positioning.

- 7 different guide types are dedicated to various welding applications and positions
- include a number of fixing grooves for your convenience
- enable simpler, easier and more consistent adjustment of how guide arms stick out
- secure proper tilting of the tractor into a direction of its movement
- maintain a permanent contact with the workpiece
- allow either interval or continuous guide arms adjustment

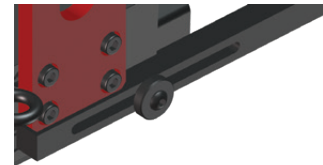


Each new guide arm has got a number of indented grooves only on one side.

All types of guide arms are available in pairs of 2 pcs: right and left.



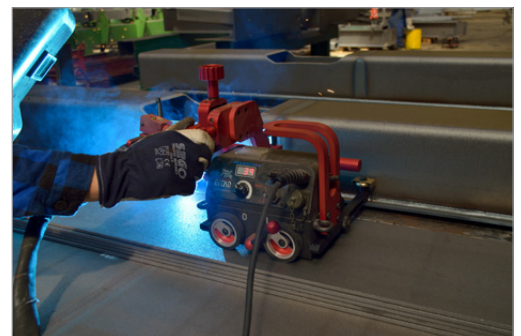
Interval adjustment of a degree
how much the guide arms stick out



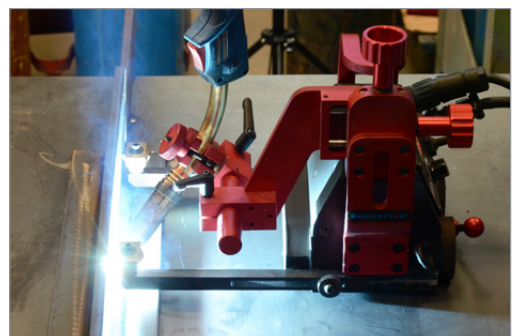
Continuous adjustment of a degree
how much the guide arms stick out



Low guide arms (set of 2 pcs)
PRW-0752-12-00-00-0

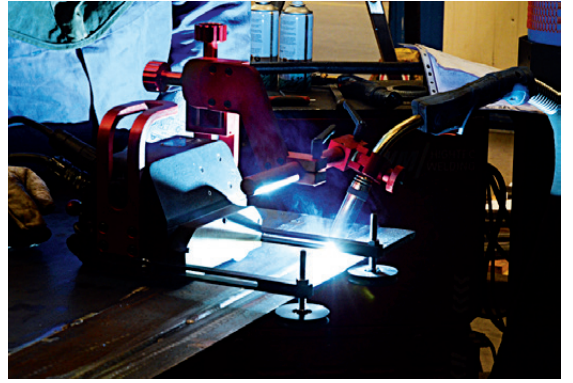


High guide arms (set of 2 pcs)
PRW-0752-13-00-00-0





Edge following guide arms (set of 2 pcs)
PRW-0466-41-00-00-1



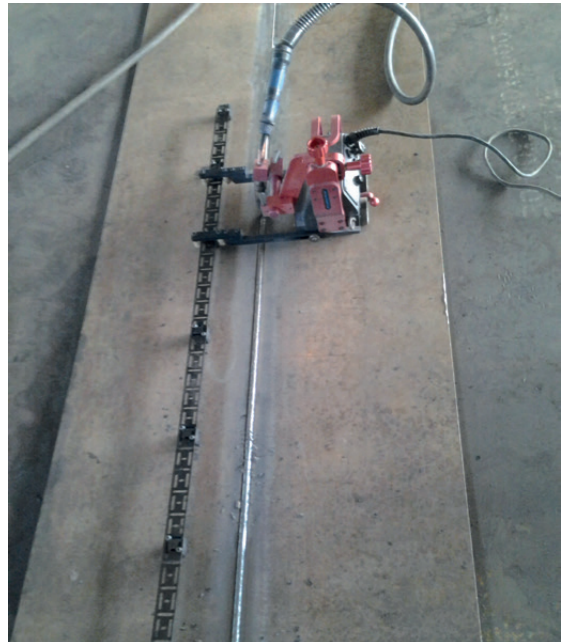
Adjustable guide arms (set of 2 pcs)
PRW-0752-10-00-00-0



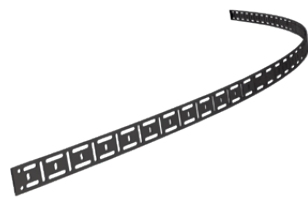
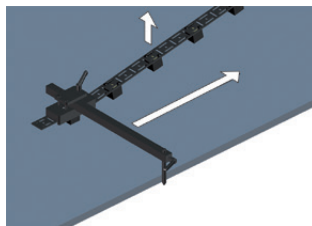
Magnet guide arms (set of 2 pcs)
PRW-0752-11-00-00-0



Track following guide arms (set of 2 pcs)
PRW-0752-14-00-00-0



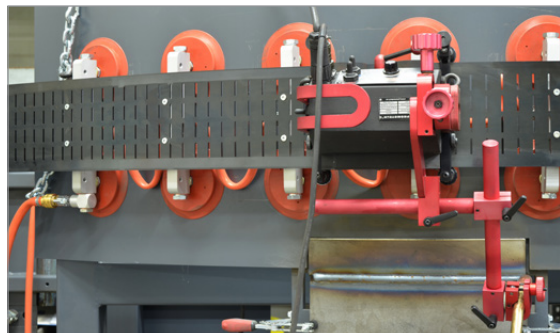
Guide adjustment tool to position the track parallel to the edge
UST-0466-53-00-00-0



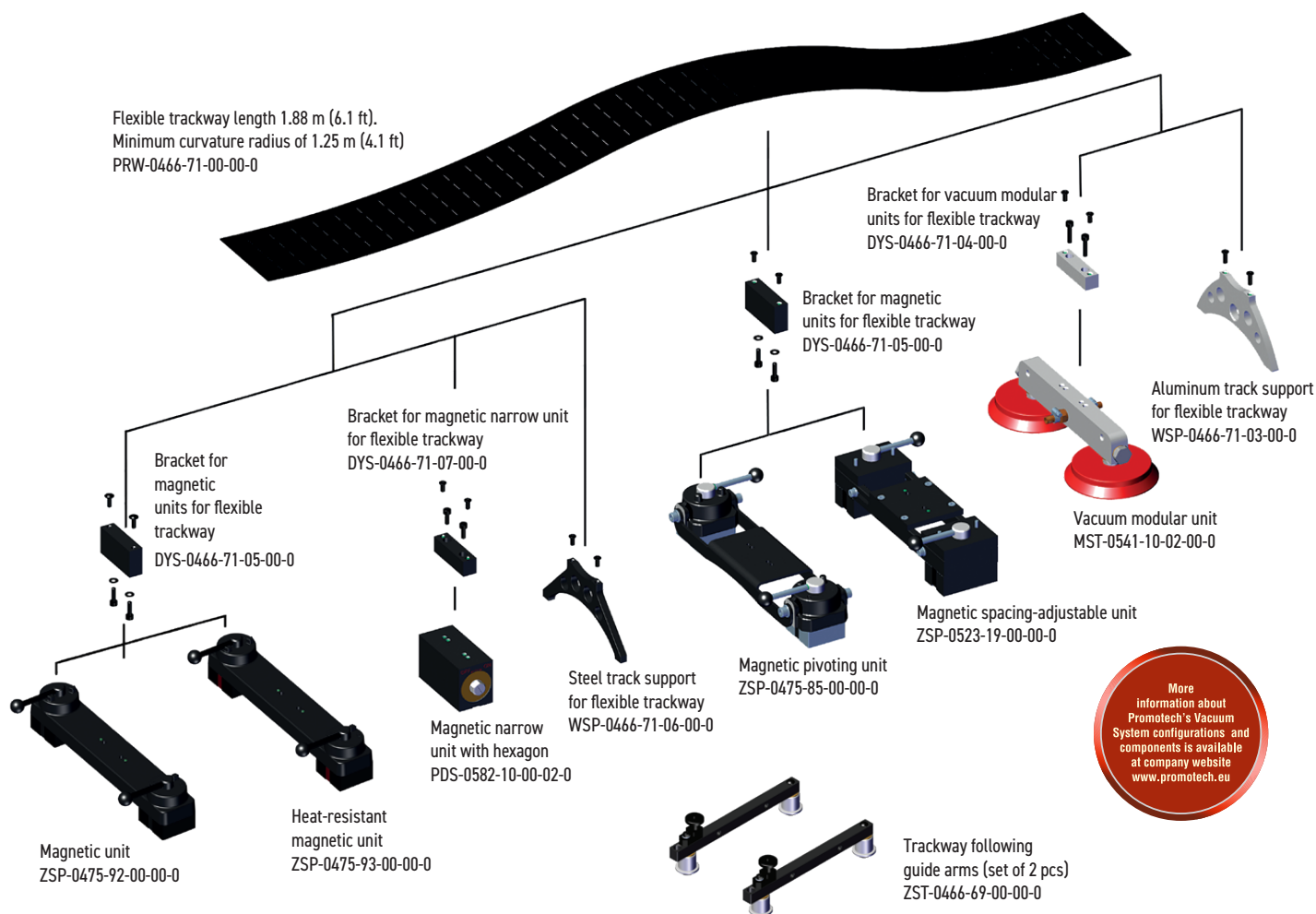
Flexible track length 185 cm (6ft) 1pc
Minimum curvature radius of 1.0 m (3.3 ft)
PRW-0466-50-01-01-0



Magnetic block for flexible track
box of 10 pcs
BLO-0466-68-00-00-0



Depending on sort of fixing units in use with flexible trackway, Gecko and Gecko HS welding tractors are suitable for applications with carbon steel, stainless steel and aluminum.



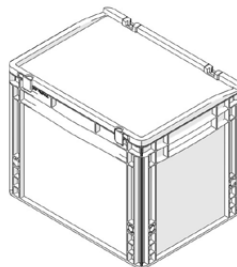
1. Drive unit with control panel
2. Adjustable guide arm
3. Quick clamp torch holder
4. Cross slide assembly
5. Main power switch (0/I)
6. Weld contact / Arc ignition socket
7. Lug for fall arrester



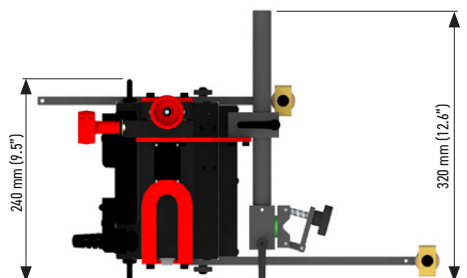
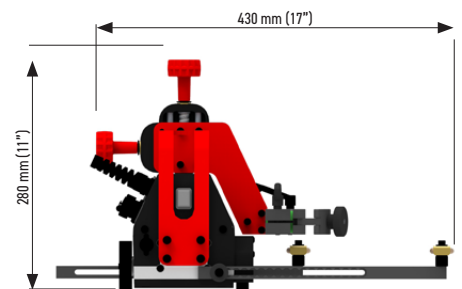
TECHNICAL SPECIFICATIONS	GECKO	GECKO HS
Voltage	1~ 115-230 V, 50-60 Hz 42 V, 50-60 Hz	1~ 115-230 V, 50-60 Hz 42 V, 50-60 Hz
Power	20 W	20 W
Welding position (according to EN ISO 6947 and AWS/ASME)	PA / 1F / 1G PB / 2F PC / 2G PD / 4F PE / 4G PG / 3F / 3G (contact dealer)	PA / 1F / 1G PB / 2F PC / 2G PD / 4F PE / 4G
Torch diameter	16-22 mm (0.63-0.87"); up to 35 mm (1.38") option	16-22 mm (0.63-0.87"); up to 35 mm (1.38") option
Minimum radius of curved workpiece surface	Outer 600 mm (23-5/8") Inner 800 mm (31-1/2")	Outer 600 mm (23-5/8") Inner 800 mm (31-1/2")
Minimum workpiece thickness	4 mm (0.16")	4 mm (0.16")
Ground clearance	4 mm (0.16")	4 mm (0.16")
Horizontal pulling force	150 N	150 N
Vertical pulling force	100 N	N/A
Cross slide adjustment range	0-35 mm (0-1.38") up down, left-right	0-35 mm (0-1.38") up down, left-right
Horizontal speed	0-110 cm/min (0-43.3 in/min)	5-220 cm/min (1.5-86.6 in/min)
Vertical speed	0-100 cm/min (0-39.4 in/min)	N/A
Weight	8 kg (18 lbs)	8 kg (18 lbs)
Welding settings storage	1 (last used)	1 (last used)
Product Code (115-230 V, 50-60 Hz, plug EU)	WOZ-0752-10-20-02-0	WOZ-0772-10-20-03-0
Product Code (115-230 V, 50-60 Hz, plug UK)	WOZ-0752-10-20-03-0	WOZ-0772-10-20-04-0
Product Code (42 V, 50-60 Hz)	WOZ-0777-10-04-01-0	WOZ-0778-10-04-01-0

Standard shipping set:

- Gecko tractor
- Standard guide arms (set of 2 pcs)
- Long rod torch holder with clamp 16-22 mm
- Dual arc ignition cable of 6.5 m (21 ft)
- 4 mm hex wrench
- Plastic box
- Operator's manual



Dimensions:



More information at www.promotech.eu



American Welding Society
Supporting Company Member

Mitglied im DVS - Deutscher Verband für
Schweißen und verwandte Verfahren e. V.

DVS VERBAND

All information is subject to change without notice. 24.05



PROMOTECH Sp. z o.o.
ul. Elewatorska 23/1, 15-620 BIAŁYSTOK, POLAND
tel. (+48 85) 678 34 05, fax (+48 85) 662 78 77
marketing@promotech.eu www.promotech.eu

Your local dealer:

