

■ WIRE FEEDER BOOMS

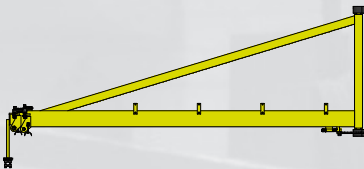
Highly useful devices that improve ergonomics and increase flexibility of welding stations.

■ Main features and benefits:

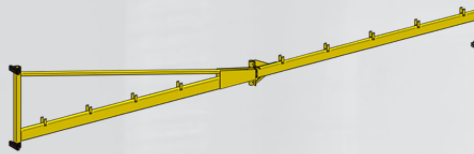
- extended workspace
- more freedom of movement over significantly larger area comparing to the traditional setup
- no wires on the floor
- no mess of tangled cables that in extreme cases can be outright dangerous
- more convenient welding of bigger and complex constructions
- simple and robust device
- can be easily mounted to the construction elements of the production halls with no need for any additional infrastructure
- permissible load: up to 50 kg



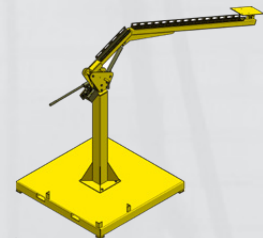
■ Three types to choose from:



Wall mounted telescopic wire feeder boom



Wall mounted pivot wire feeder boom



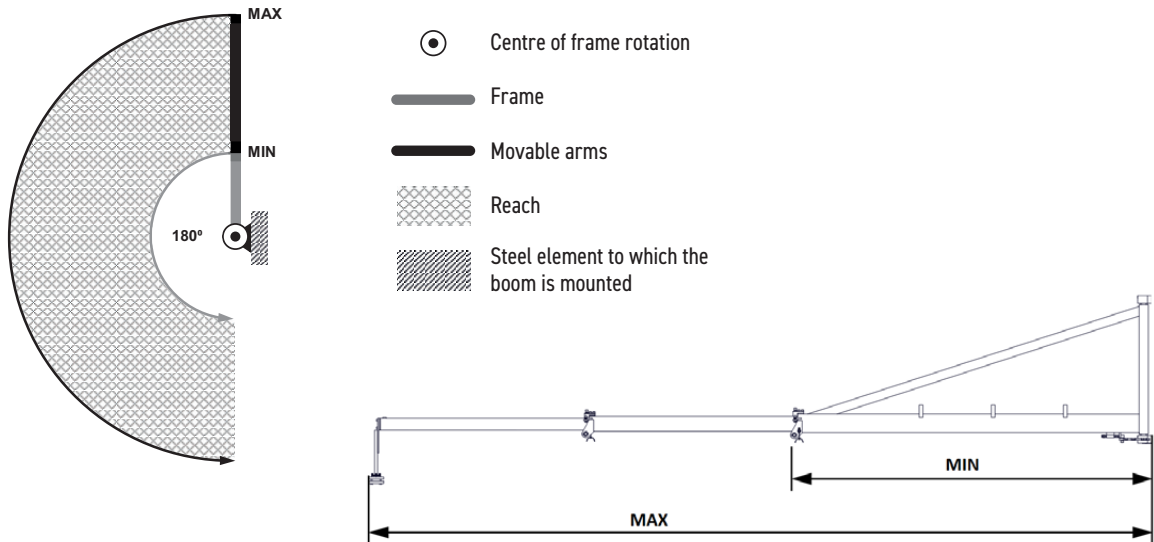
Hydraulic wire feeder boom

■ Wall mounted telescopic wire feeder boom

- can rotate up to 180° around the vertical axis
- two types of frames: either welded or bolted for self-assembly after shipping
- two adjustable ranges of movable arms: either up to ca 6000 mm or up to ca 8000 mm
- two types of holders: either R type or L type
- eight various models altogether



Adjustable reach of telescopic wire feeder booms

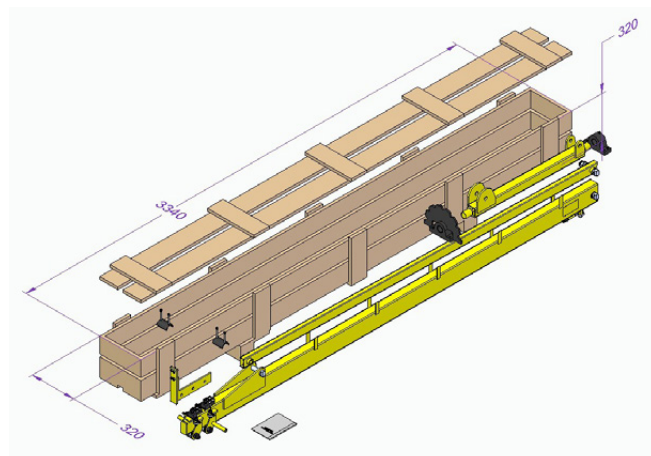
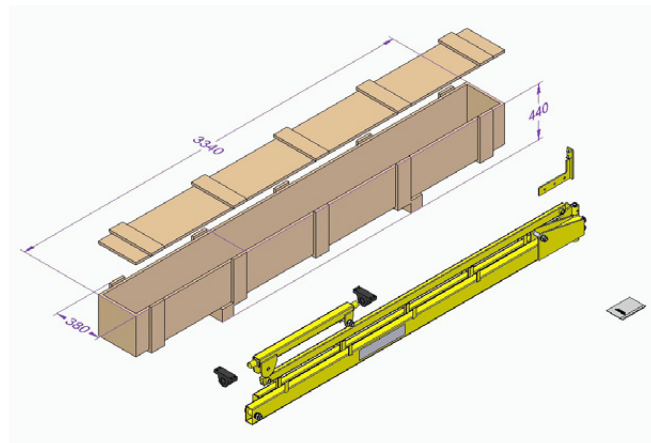


TELESCOPIC	Frame	Reach (Min - Max)	Rotation	Max. load	Weight	Holder type	Product code
TL6000 WL	Welded	2500-5980 mm	0-180°	50 kg	95 kg	L	WSG-0569-10-00-01-0
TL6000 WR	Welded	2550-6030 mm	0-180°	50 kg	95 kg	R	WSG-0569-10-00-02-0
TL8000 WL	Welded	3250-7710 mm	0-180°	50 kg	120 kg	L	WSG-0429-10-00-01-0
TL8000 WR	Welded	3310-7770 mm	0-180°	50 kg	120 kg	R	WSG-0429-10-00-02-0
TL6000 BL	Bolted	2540-5990 mm	0-180°	50 kg	107 kg	L	WSG-0767-10-00-00-0
TL6000 BR	Bolted	2590-6040 mm	0-180°	50 kg	107 kg	R	WSG-0767-10-00-01-0
TL8000 BL	Bolted	3320-7750 mm	0-180°	50 kg	130 kg	L	WSG-0732-10-00-00-0
TL8000 BR	Bolted	3370-7800 mm	0-180°	50 kg	130 kg	R	WSG-0732-10-00-01-0

Bolted frame versions

To optimize transport costs, Promotech offers a new line of wire feeder booms (both pivot and telescopic) with a bolted frame that is disassembled for delivery and ready for self-assembly after shipping.

Each bolted wire feeder boom is individually packaged in a wooden shipping box.



Types of holders

Each telescopic and pivot wire feeder boom comes with a specific type of holder either "R" or "L". Please refer to product codes available in tables at page 4 and 6.

To increase the functionality of the booms, their current design allows the users to replace the original holder with another holder variant even after purchase. Both the ,R' and ,L' brackets are mounted in the same way (see below), so users are able to swap them themselves.



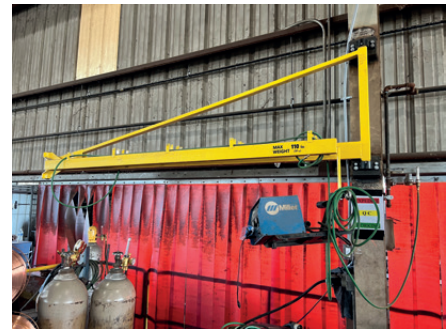
"R" type wire feeder holder
Product code:
MCW-0732-08-00-00-0



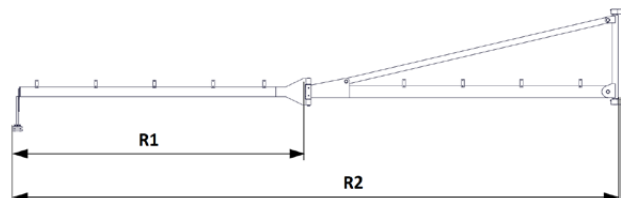
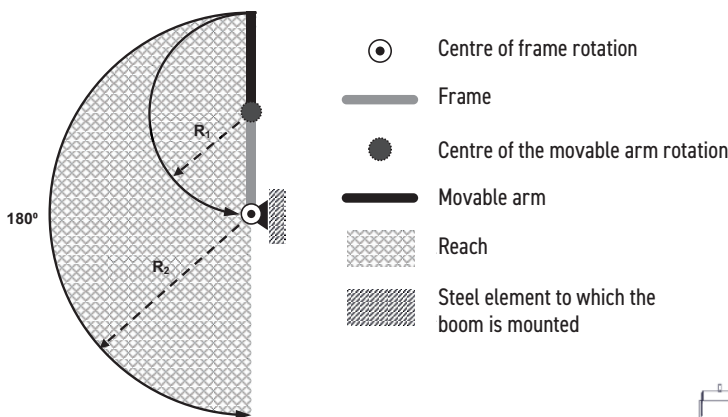
"L" type wire feeder holder
Product code:
MCW-0732-09-00-00-0

Wall mounted pivot wire feeder boom

- can rotate up to 180° around the vertical axis
- additionally the movable arm can be rotated up to 180° around the pivot
- two types of frames: either welded or bolted for self-assembly after shipping
- adjustable reach of movable arm: up to ca 6000 mm
- two types of holders: either R type or L type
- four various models altogether



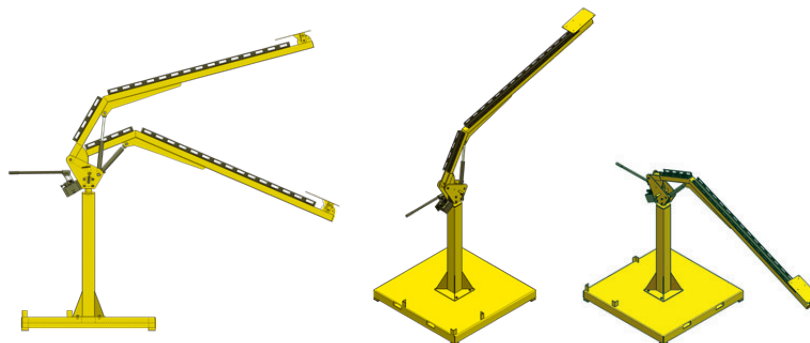
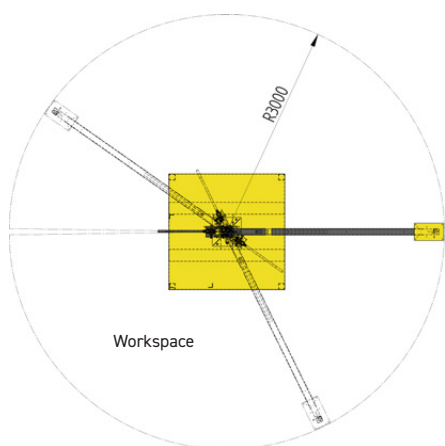
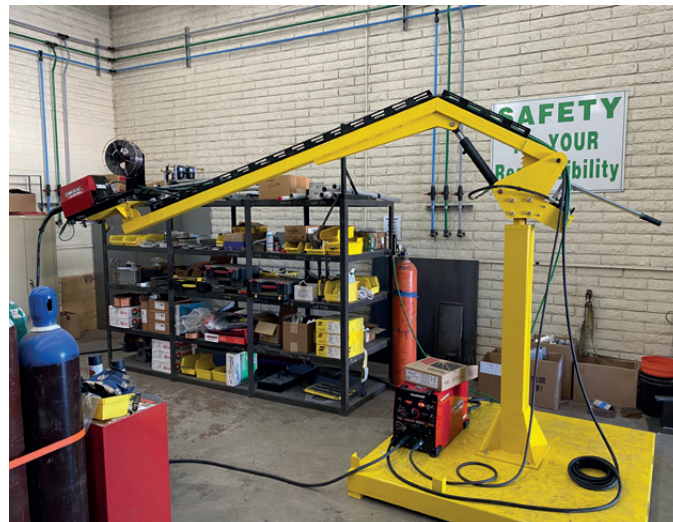
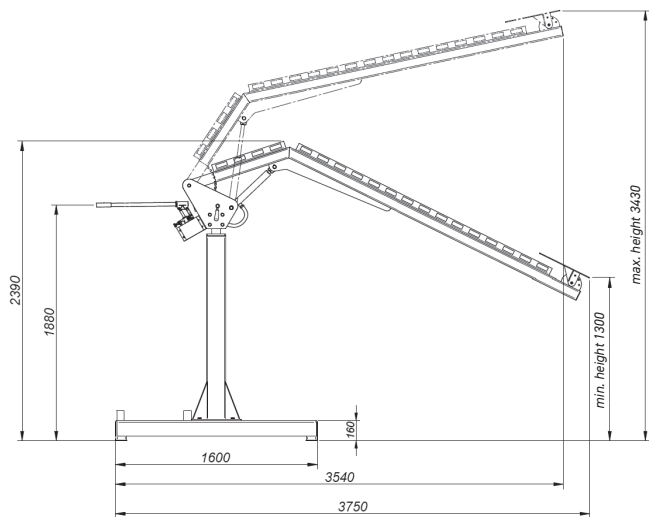
Reach of pivot wire feeder booms



PIVOT	Frame	Reach (R1 - R2)	Rotation	Max. load	Weight	Holder type	Product code
WP6000 WL	Welded	2830-5940 mm	0-180°	50 kg	100 kg	L	WSG-0725-10-00-01-0
WP6000 WR	Welded	2890-6000 mm	0-180°	50 kg	100 kg	R	WSG-0725-10-00-02-0
WP6000 BL	Bolted	2840-5980 mm	0-180°	50 kg	110 kg	L	WSG-0745-10-00-00-0
WP6000 BR	Bolted	2890-6030 mm	0-180°	50 kg	110 kg	R	WSG-0745-10-00-01-0

Hydraulic wire feeder boom

- can be rotated up to 360° around the vertical axis
- adjustable height of the boom from 1300 mm (51") up to 3430 mm (135")
- product code: WSG-000003



HYDRAULIC WIRE FEEDER BOOM Technical specifications	
Reach	3000 mm (118")
Lifting height	1300 – 3430 mm (51 – 135")
Rotation angle	0-360°
Maximum load (wire feeder, wire)	50 kg (110 lbs)
Dimensions [L x W x H]	3750 mm x 1600 mm x 2390 mm (min) / 3430 mm (max) 148" x 63" x 94" (min) / 135" (max)
Weight	330 kg (733 lbs)

More information at www.promotech.eu



PROMOTECH Sp. z o.o.
ul. Elewatorska 23/1, 15-620 BIAŁYSTOK, POLAND
tel. (+48 85) 678 34 05, fax (+48 85) 662 78 77
marketing@promotech.eu www.promotech.eu

Your local dealer:

