

BM-7 | COMPACT PLATE AND PIPE BEVELLER

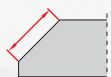
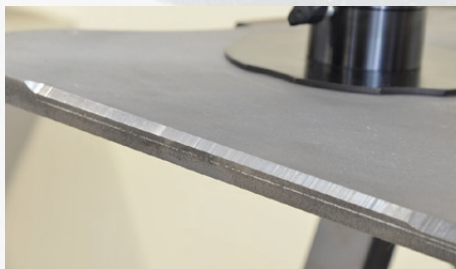
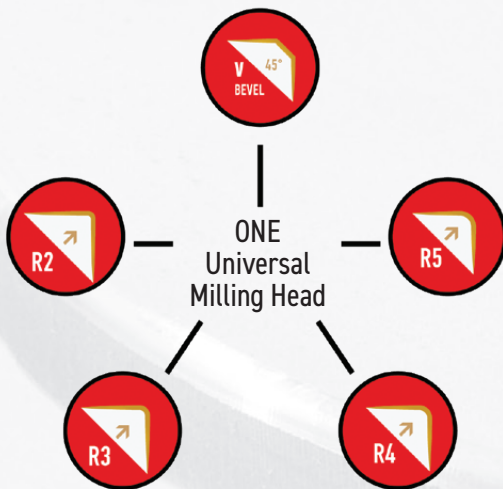
Small and lightweight beveling machine for milling plates, pipes and contour profiles.

Perfect solution for radius edge applying to steel sections before painting, to prevent rust build up on sharp edges.

Quick, simple to use beveller that creates a perfect radius (R2, R3, R4 or R5) in just one pass, saving time and money over conventional grinding methods.

Features & benefits

- lightweight and compact design
- small overall dimensions
- excellent for limited access
- continuous bevel width adjustments
- ideal for radius edge beveling
- one single 45 degrees milling head for both radius and V bevels



Bevel width
up to 7 mm



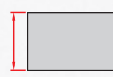
Top beveling



Bevel angles
45°, 30° (option)



Countersinking
Min. ID 40 mm



Min plate
thickness
1.5 mm



Bevel radius R2,
R3,
R4 or R5



Arched edge
beveling



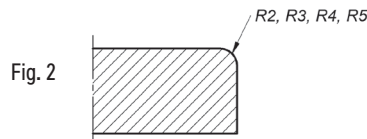
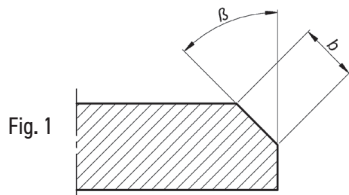
Pipe ID beveling
Min. ID 40 mm



Pipe OD beveling

BM-7 TECHNICAL SPECIFICATION

Power supply	1~ 110-120 V, 50-60 Hz 1~ 220-240 V, 50-60 Hz
Motor	1080 W
Spindle speed (without load)	6200 rpm
Maximum bevel width (b)	7 mm (0.28"); Fig.1
Bevel angle (β , depending on milling head)	45°; 30° (option); Fig.1
Minimal diameter of countersinking	ca 40 mm (1.6")
Rounding edges	R2, R3, R4, R5; Fig. 2
Dimensions (L x W x H)	339 mm (13.3") x 135 mm (5.3") x 320 mm (12,6")
Weight (without milling head)	6.1 kg (13.45 lbs)
Product code (220-240 VAC)	UKS-0717-10-20-00-0
Product code (110-120 VAC)	UKS-0717-10-10-00-0



Standard set includes:

- BM-7 beveller including milling head 45° w/o inserts
- Plastic box
- Special wrench
- Torx T15 screwdriver
- Screw grease (5 g)
- Operator's Manual

Accessories:

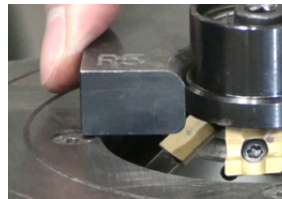
- GLW-0540-08-00-00-0 Milling head 45° for cutting and radius bevels
- GLW-0540-09-00-00-0 Milling head 30° for cutting
- PLY-000391 Cutting insert for steel (4pcs required)
- PLY-000423 Cutting insert for aluminum (4pcs required)
- PLY-000737 Cutting insert R2 (4pcs required)
- PLY-000738 Cutting insert R3 (4pcs required)
- PLY-000739 Cutting insert R4 (4pcs required)
- PLY-000740 Cutting insert R5 (4pcs required)



- UST-0509-16-00-00-0 Radius positioner (R2, R3, R4, R5)

Spare and consumable parts:

- SRB-000289 Insert Screw
- RLK-0540-08-02-00-0 Guiding roller
- SMR-000005 Screw grease (5 g)
- NKL-0540-15-00-00-0 Anti-scratch guide sticker
- SCZ-000009 Carbon brush for 115 V / 230 V



Straight edge beveling with radius



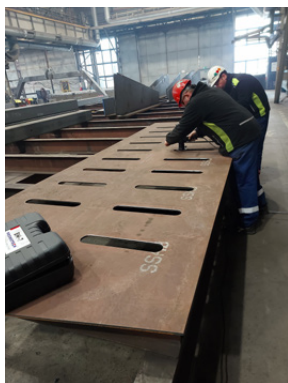
Arched edge beveling with radius



Plate beveling



Pipe beveling



Countersinking

