

PROMOTECH®

MILLING



DRILLING



TAPPING

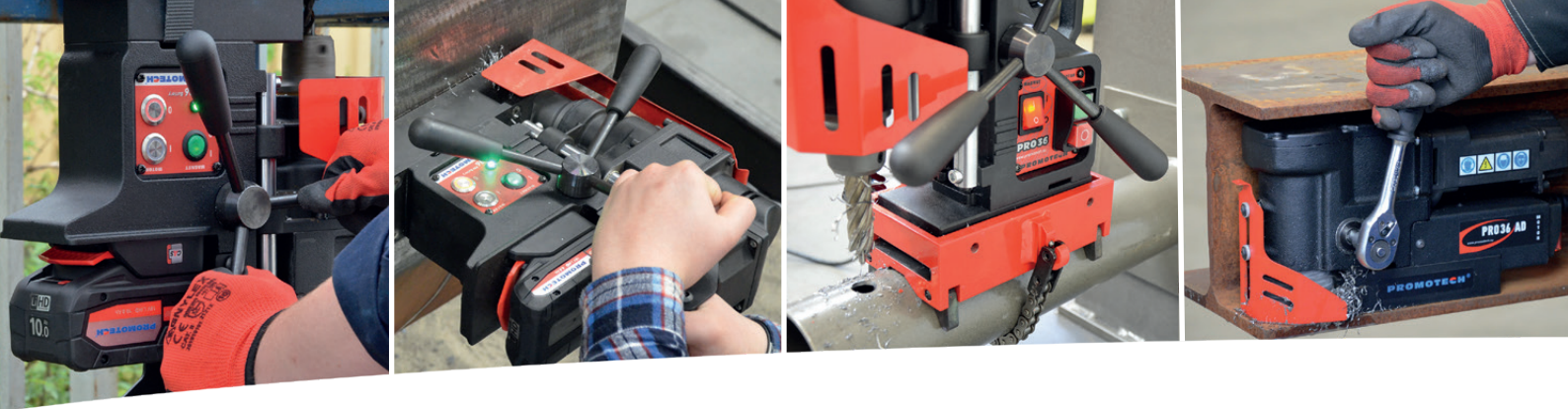


PUNCHING



*smart tools
for heavy tasks*

**DRILLING / TAPPING
PUNCHING MACHINES**



COMPACT DRILLS

The compact design and excellent weight-to-power ratio make these mag drills a popular choice for customers. With a milling capacity of up to 36 mm, dual bars guide system for extraordinary stiffness and adjustment free operation, and increasingly common battery drive, these machines are ideal for site work.



| | PRO-36 | PRO-36 AD | PRO-36 AUTO |
|-------------------|--------|-----------|-------------|
| Milling capacity | 36 mm | 36 mm | 36 mm |
| Drilling capacity | 12 mm | 12 mm | 12 mm |
| Stroke | 70 mm | 39 mm | 70 mm |
| Depth of cut | 51 mm | 30 mm | 51 mm |
| Power | 1020 W | 1020 W | 1020 W |
| Weight | 10 kg | 9.5 kg | 13.5 kg |



| | PRO-36 PM | PRO-36 T3 | PRO-36 BATTERY | PRO-36 PM BATTERY |
|-------------------|-----------|-----------|-------------------------------|-------------------------------|
| Milling capacity | 36 mm | 36 mm | 36 mm | 36 mm |
| Drilling capacity | 12 mm | 12 mm | 12 mm | 12 mm |
| Stroke | 70 mm | 70 mm | 70 mm | 70 mm |
| Depth of cut | 50 mm | 35 mm | 50 mm | 50 mm |
| Power | 1020 W | 1020 W | 450 W | 400 W |
| Weight | 13.2 kg | 14 kg | 11.5 kg (with 4.0 Ah Battery) | 14.5 kg (with 4.0 Ah Battery) |

Promotech offers the most powerful LiHD (High Density Lithium Ion) battery packs that feature longer run time, more power, longer service life, and extremely robust design.



Battery 4.0 Ah



Battery 5.5 Ah



Battery 10.0 Ah



Battery charger

Charging time
~ 30 min (4.0 Ah)
~ 41 min (5.5 Ah)
~ 74 min (10.0 Ah)

PROMOTECH®

Elewatorska 23/1, 15-620 Białystok, POLAND
www.promotech.eu marketing@promotech.eu



**WATCH US
ON YOUTUBE**





MEDIUM-SIZED DRILLS

The exceptionally wide range of mag drills in this segment ensures that every customer will find a machine perfectly suited to their specific application, regardless of the tool used, such as HSS and TCT cutters or twist drills. All drills are equipped with smart electromagnetic bases including many advanced systems.

| | PRO-16 | PRO-40 | PRO-51 |
|-------------------|--------|--------|---------|
| Milling capacity | - | 40 mm | 51 mm |
| Drilling capacity | 16 mm | 16 mm | 23 mm |
| Stroke | 160 mm | 160 mm | 153 mm |
| Depth of cut | 50 mm | 50 mm | 51 mm |
| Power | 1100 W | 1100 W | 1300 W |
| Weight | 14 kg | 13 kg | 16.5 kg |



PRO-16



PRO-40



PRO-51



PRO-50



PRO-50 TCT



PRO-55

| | PRO-50 | PRO-50 TCT | PRO-55 |
|-------------------|---------|------------|--------|
| Milling capacity | 50 mm | 45 mm | 55 mm |
| Drilling capacity | 23 mm | 18 mm | 16 mm |
| Stroke | 160 mm | 160 mm | 160 mm |
| Depth of cut | 75 mm | 75 mm | 75 mm |
| Power | 1150 W | 1150 W | 1100 W |
| Weight | 15.5 kg | 15.5 kg | 15 kg |

| | PRO-55 TCT | PRO-62 | PRO-72 |
|-------------------|------------|--------|--------|
| Milling capacity | 45 mm | 65 mm | 70 mm |
| Drilling capacity | 16 mm | 16 mm | 25 mm |
| Stroke | 160 mm | 95 mm | 190 mm |
| Depth of cut | 75 mm | 75 mm | 75 mm |
| Power | 1100 W | 1600 W | 1600 W |
| Weight | 15 kg | 17 kg | 18 kg |



PRO-55 TCT



PRO-62



PRO-72



TAPPING & DRILLING MACHINES

The most advanced and powerful mag drills feature ability to tap pre-drilled holes, stable speed regardless of load changes, continuous speed adjustment to optimize working conditions depending on diameter, steel grade or tool type, LED indicator to facilitate proper operation and increase work safety, both overload and overheat protection to prevent misuse of the machine and many more.

| PRO-52T | |
|-------------------|--------|
| Milling capacity | 50 mm |
| Tap size | M20 |
| Drilling capacity | 23 mm |
| Stroke | 190 mm |
| Depth of cut | 75 mm |
| Power | 1600 W |
| Weight | 17 kg |



| PRO-72T | |
|-------------------|--------|
| Milling capacity | 70 mm |
| Tap size | M20 |
| Drilling capacity | 25 mm |
| Stroke | 190 mm |
| Depth of cut | 75 mm |
| Power | 1600 W |
| Weight | 18 kg |



| PRO-122T SB | |
|-------------------|----------|
| Milling capacity | 120 mm |
| Tap size | M30 |
| Drilling capacity | 31.75 mm |
| Stroke | 225 mm |
| Depth of cut | 100 mm |
| Power | 2300 W |
| Weight | 28.5 kg |



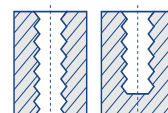
| PRO-152T | |
|-------------------|--------|
| Milling capacity | 150 mm |
| Tap size | M42 |
| Drilling capacity | 47 mm |
| Stroke | 260 mm |
| Depth of cut | 100 mm |
| Power | 2300 W |
| Weight | 31 kg |



As a long-standing manufacturer of mag drills popular with customers, Promotech introduces quick change tapping system including wide range of accessories to perform both through and blind holes tapping



- TC - Tapping Chucks MT2, MT3, MT4 featuring securing nut (8 models altogether)
- TA - Tapping Adapters without safety clutch for tapping tools size M3 up to M42 for through holes (26 models altogether)
- TASC - Tapping Adapters with Safety Clutch for tapping tools size M3 up to M42 for blind holes (26 models altogether)
- RA - Reduction Adapters to extend the scope of tapping tools for use with particular tapping chucks (5 models altogether)



PROMOTECH®

Elewatorska 23/ 1, 15-620 Białystok, POLAND
www.promotech.eu marketing@promotech.eu



**WATCH US
ON YOUTUBE**





ATEX DRILLS FOR HAZARDOUS ENVIRONMENTS

ATEX drill family conform to Ex c IIC T6/T4 Gb and Ex c IIIB T6/T4 Dd requirements for equipment used in hazardous environments such as oil drilling platforms, petrochemical plants, oil refineries, shipbuilding and petrochemical industry, where electric appliances are prohibited for safety reasons. Combination of pneumatic drive and permanent magnetic base eliminate the need of electric power supply allowing for a safe use in Ex zones and where hazardous, flammable or combustible vapors, liquids, dusts or residues may be present.



| | PRO-35 ADA ATEX | PRO-45/2 ATEX | PRO-200A ATEX |
|-------------------|-----------------|---------------|---------------|
| Milling capacity | 35 mm | 45 mm | 200 mm |
| Drilling capacity | 16 mm | 20 mm | 45 mm |
| Stroke | 39 mm | 150 mm | 400 mm |
| Depth of cut | 25 mm | 51 mm | 100 mm |
| Power | 800 W | 800 W | 3650 W |
| Weight | 17 kg | 26.5 kg | 130 kg |

RAIL DRILLING MACHINES FOR ALL RAIL STANDARDS

With range of most common and custom-made positioners and templates our drilling machines are able to suit any required rail standards worldwide. Customers can choose from three supply options. Namely electric motor, petrol motor or battery drive. All models enable drilling of holes up to 36 mm in diameter, whereas their compact and lightweight design make them ideal solution for site work.

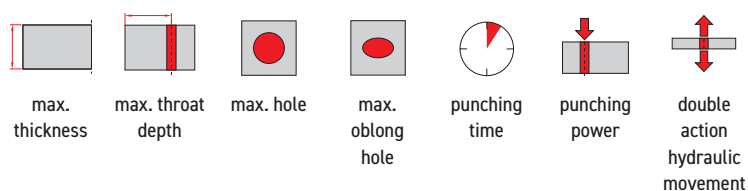


| | PRO-36R ELECTRIC | PRO-36R BATTERY | PRO-36RH PETROL |
|-------------------|-----------------------------|------------------------|-----------------------------|
| Milling capacity | 36 mm | 36 mm | 36 mm |
| Drilling capacity | 16 mm | 16 mm | 16 mm |
| Stroke | 40 mm | 40 mm | 39 mm |
| Depth of cut | 30 mm | 30 mm | 30 mm |
| Power | 1020 W | 450 W | 1500 W |
| Weight | 14.5 kg | 14.5 kg | 18.5 kg |
| Drive | single phase electric motor | battery electric motor | 4-stroke HONDA petrol motor |



HYDRAULIC PUNCHERS

The PRO-60 HP and PRO-110 HP hydraulic punching machines produce holes in seconds pressing a tool known as a punch die through a metal workpiece. Available in two models with 35 ton and 47 ton punching power, these portable machines speed up the production of holes and slots of different shapes, such as round, oblong, oval or hexagonal with a diameter of up to 27 mm. The double action design of the fully automated punch and return minimizes cycle times and significantly increases productivity.



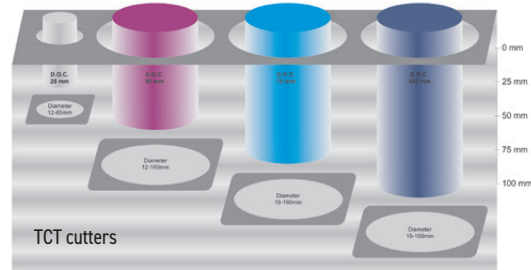
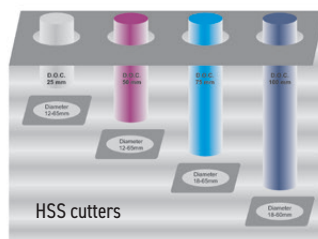
| | | | | | | | |
|------------|-------|--------|-------|------------|-------|--------|-----|
| PRO-60 HP | 13 mm | 60 mm | 27 mm | 25 x 18 mm | 5 sec | 35 ton | YES |
| PRO-110 HP | 16 mm | 110 mm | 27 mm | 25 x 18 mm | 8 sec | 47 ton | YES |



HSS/TCT CUTTERS, COOLANTS/LUBRICANTS & AUXILIARY ACCESSORIES

Annular cutters are specialized design bits for milling through steel much faster than regular drill bits. We supply HSS cutters with diameters up to 65 mm and cutting depths up to 100 mm and TCT cutters with diameters up to 160 mm and cutting depths up to 100 mm.

Eco-friendly HD-CUT cooling/lubricating, non-corrosive, biodegradable coolants offer superior properties and produce outstanding tool life and cut finish. We also offer a full range of other accessories for a variety of drilling applications.



VACUUM PAD FOR MAG DRILLS

Special type of clamping device that enables compact mag drills to work effectively on thin and non-ferrous materials.



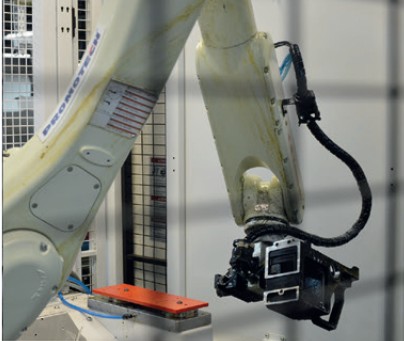
Vacuum pad



Compressed air ejector

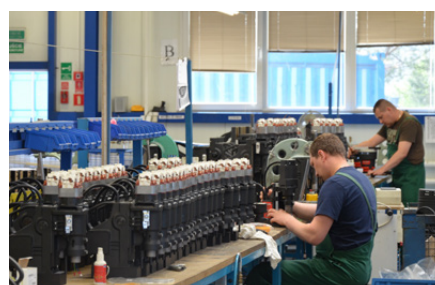
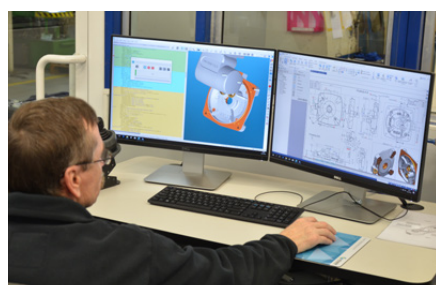
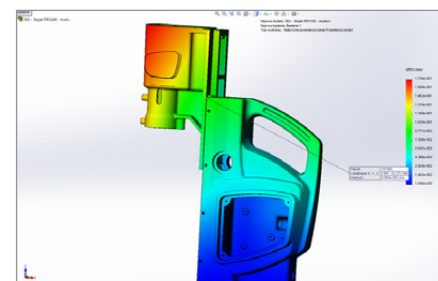
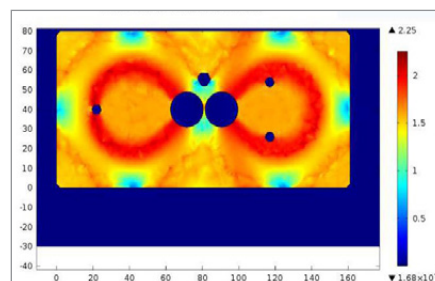


Vacuum pump



BENEFIT FROM OUR EXPERTISE

Depending on the model chosen, our drills incorporate a range of innovative systems and solutions based on the expertise we have gained over 35 years of engineering.



PROMOTECH®

Elewatorska 23/ 1, 15-620 Białystok, POLAND
www.promotech.eu marketing@promotech.eu



**WATCH US
ON YOUTUBE**



PROMOTECH Sp. z o.o.
ul. Elewatorska 23/1
15-620, Białystok
POLAND

Tel. +48 85 678 34 95
Fax +48 85 662 78 77
marketing@promotech.eu
www.promotech.eu

PROMOTECH ME (FZE)
P6-111, SAIF ZONE
P.O.BOX. 514914
SHARJAH - U.A.E.

Tel: +971 6 552 9493
Fax: +971 6 552 9053
Mobile: +971 56 2935337
infoPME@promotech.eu
akumar@promotech.eu
www.promotechme.ae

PROMOTECH FABRICATION
MACHINES PVT LTD
Corporate Office :
C 8, DSII DC Packaging Complex
Kirti Nagar New Delhi – 110015

Mobile: +91 966 766 0304
india@promotech.eu
www.promotech-india.in

Promotech Deutschland GmbH
Waldseer Straße 11
D-88326 Aulendorf
Deutschland

Mobile: +49 160 613 6666
Phone: +49 7525 507955-0
dach@promotech.eu
www.promotech-deutschland.de



PROMOTECH®

PROFESSIONAL MANUFACTURER OF PREMIUM MACHINES FOR METALWORKING INDUSTRY

Promotech is an innovation driven ISO 9001:2015 manufacturer of professional power tools, welding automation equipment and industrial systems tailored for structural steel fabricators, heavy machinery manufacturers, shipyards and other metal machining companies.

Main product lines:

- mag drills, pneumatic drills, rail drills and hydraulic punchers
- weld preparation/portable and stationary bevellers for plates and pipes
- welding and cutting tractors
- welding and cutting automation equipment

Our products:

- offer solutions to reduce cost and increase productivity
- are designed and engineered for long term use in tough industrial conditions
- meet the requirements of the most demanding clients and markets worldwide
- are made in Poland according to the highest quality standards
- include top quality components
- are thoroughly tested for quality approval
- proved to be extremely reliable with a variety of practical applications in most difficult climatic environments

More information about PROMOTECH and the products is available at
www.promotech.eu and www.atexdrilling.com



Mitglied im DVS – Deutscher Verband für
Schweißen und verwandte Verfahren e. V.



**WATCH US
ON YOUTUBE**

Visit our channel

