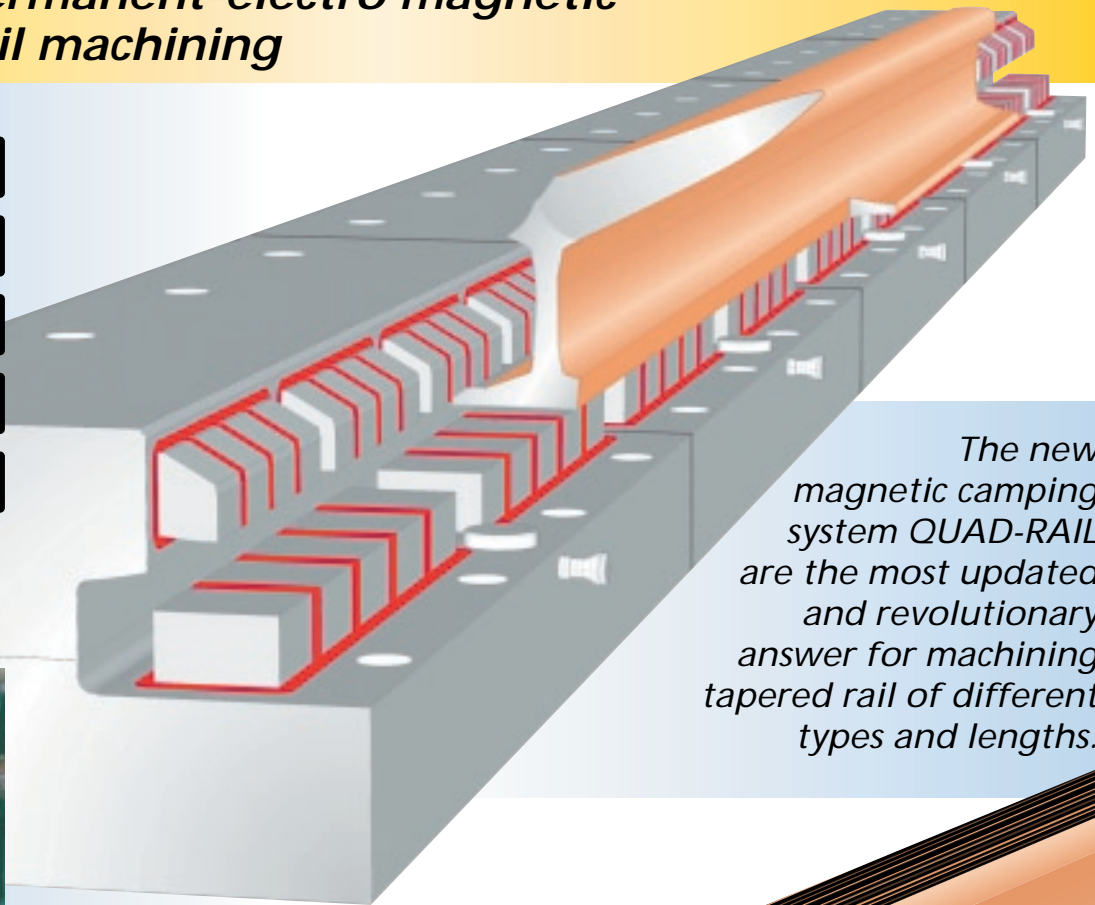


QUAD-RAIL

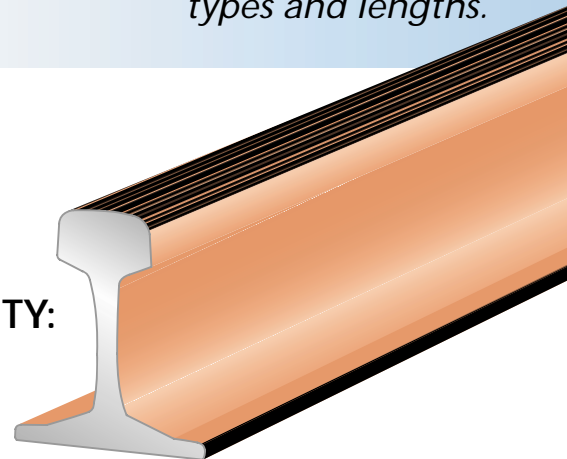
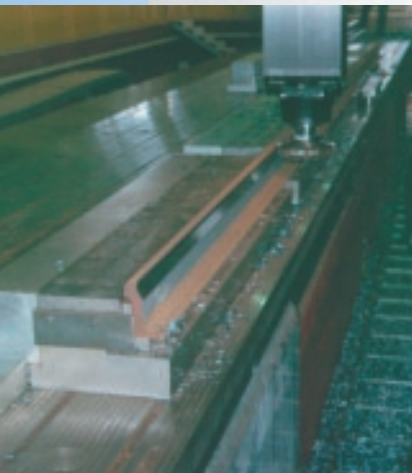
NEW

Heavy duty permanent-electro magnetic systems for rail machining

- POWERFULL
- SAFE
- ROBUST
- COMPACT
- RELIABLE



The new magnetic clamping system QUAD-RAIL are the most updated and revolutionary answer for machining tapered rail of different types and lengths.

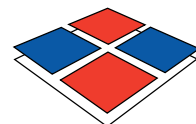


FLEXIBILITY AND PRODUCTIVITY:

- High clamping force
- Perfect alignment of the rail
- Accurate and uniform clamping
- Complete machining in only 2 set-ups
- Absence of machining vibrations
- Low tools consumption
- High stock removal
- Superior accuracies and finishing
- Ergonomic and practical use
- Easy chips removal
- Energy saving
- Competitive cost

ECO-COMPATIBILITY

No consumption
No pollution

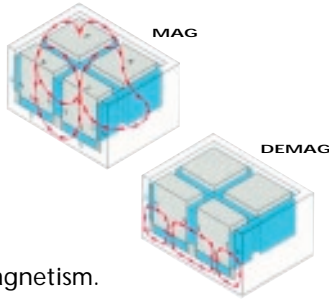


TECNOMAGNETE

Safety through Power

QUADSYSTEM TECHNOLOGY

The square poles of the patented QUADSYSTEM double-magnet circuit allow to obtain the highest concentration of force and a grid of flat and horizontal magnetic stickings able to safely hold any type of workpiece. The patented "neutral crown system" leads the magnetic fluxes totally to the active surface of the modules with a perfect insulation from any residual magnetism.



THE FRIENDLY SAFETY

An electro-permanent Tecnomagnete system doesn't overheat, doesn't deform, doesn't fear electrical breakdown because it doesn't need power supply during the working phase. Safety is thus always granted.

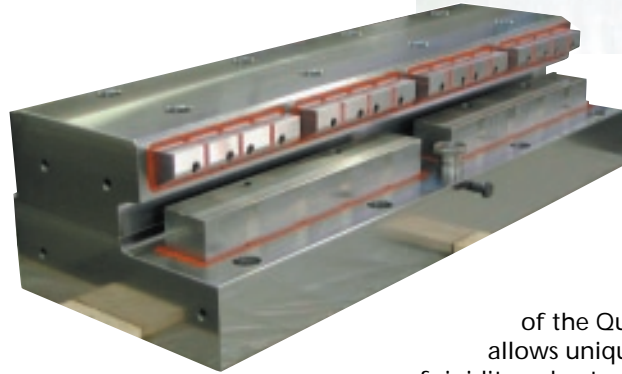
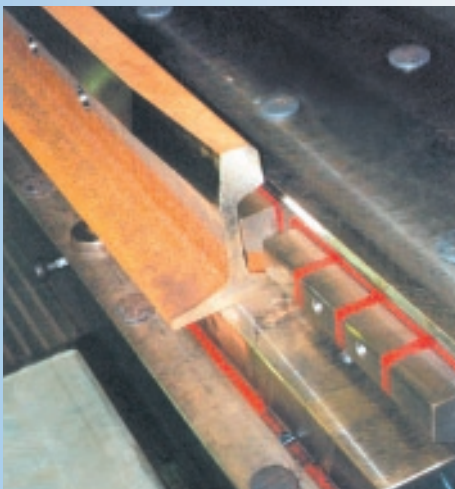
ELECTRONIC CONTROL

A specific control unit, complete with synoptic selection-control pulpit, is able to activate the modules or the single magnetic sectors, even through a digital remote control.

THE FLEXIBILITY OF THE MODULARITY

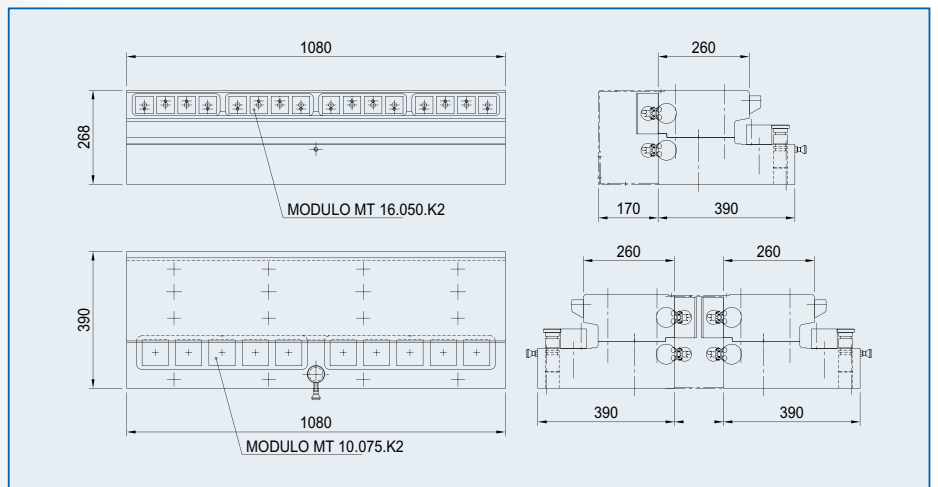
A Quad Rail system is composed using a series of standard modular elements with 1000mm fixed length each, in order to build up magnetic tables for different types of machines and length of rails to be machined. Each Quad Rail module has independent magnetic sectors right angle placed to clamp respectively the foot and the web of the rail, with a total clamping force of 14 tons/m.

Quad Rail modules are standard equipped with a series of fixed pole extensions to match with the different rail profiles.

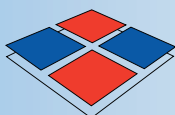


MONOBLOCK STRUCTURE

The solid block construction of the Quad Rail modules allows unique characteristics of rigidity, robustness and reliability over the time with the absence of any maintenance operation.



All data are drawn and checked with maximum care. We do not charge any responsibility for possible mistakes or omissions. We reserve the right to bring up any modification connected with the technological development.



Headquarters

Safety through power
TECNOMAGNETE®

TECNOMAGNETE S.p.A.
Via Nerviano, 31 - 20020 Lainate (MI) - ITALY
Tel. +39+02.937.591 - Fax +39+02.935.708.57
<http://www.tecnomagnete.com>

Subsidiaries abroad:

TECNOMAGNETE S.A.R.L. - France
TECNOMAGNETE Inc. - U.S.A.
TECNOMAGNETE GmbH - Germany
TECNOMAGNETE Ltd. - U.K.
TECNOMAGNETE AB - Sweden

PROMOTECH Sp. z o.o.

ul. Elewatorska 23/1,15-620 BIAŁYSTOK, POLAND
tel. (+48 85) 678-34-26, fax (+48 85) 662-78-77
e-mail: marketing@promotech.eu www.promotech.eu

rev. 07/2001 - ING